

Grazing by the coast

NAROOMA

AGENTS: David Nolan, Webster Nolan Real Estate, Sydney, 0447 278 236; John Murray, Whale Coast Realty, Narooma, 0475 053 869.

NAROOMA'S "Silvermere Farm" has been home for Denis and Kerry Davies since November 2002 but the couple's love for the area began well before then.

They had come to Narooma from Victoria where they had owned a farm at Romsey for 24 years, since 1978.

Mr Davies said the familiarity with the South Coast area resulted from the fact that Kerry's parents had retired to Merimbula, while his brother had bought a place in Mollymook, and as such they would spend summer holidays in both areas.

When travelling between the two they would often drive directly past "Silvermere Farm".

"The superb climate of the South Coast was very attractive to us," he said.

He said the purchase of the farm at Narooma and selling their Romsey property was "a leap of faith" but one that had proved to be entirely beneficial.

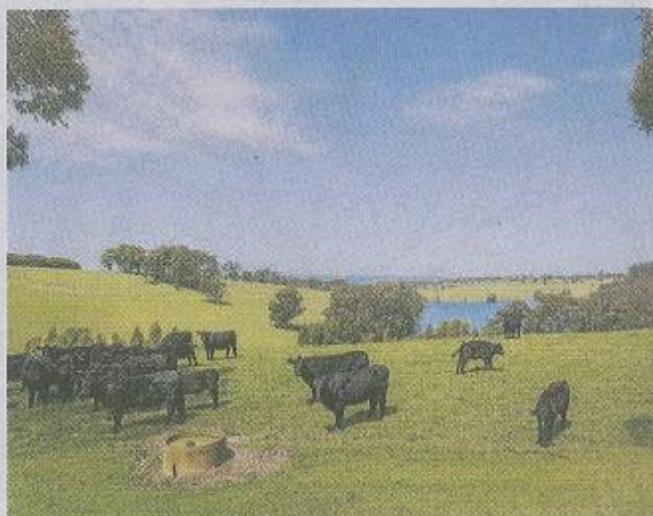
They bought all their cattle, and horses, with them to "Silvermere Farm".

"We had put together a good breeding base, and have been running about 70 Angus cows." They had been joined to Pert Angus and Te Mania Angus bulls.

Tall fescue, clover and rye have been added to the property, and cell grazing established.

They have also produced silage from the property.

In addition to the cattle, they have also run about 100 Dorpers (70 ewes, the remainder wethers), and have found them to be easy to manage.



"The property came with some excellent cattle yards, by we extended those to get a loading ramp in," he said.

About two kilometres worth of roads have been improved on the property.

The architect designed house was completed in 2012, and features floor to ceiling glass windows and sliding doors to maximise the views.

An older house is used for guest accommodation, and there is also a manager's home.

Farm infrastructure includes the set of cattle yards, two machinery sheds, a workshop, hayshed, old dairy and a dressage arena.

The 124ha (306ac) "Silvermere Farm", 10 kilometres from Narooma, is for private sale at \$4.75 million through David Nolan, Webster Nolan Real Estate, Sydney, and John Murray, Whale Coast Realty, Narooma.

- NICK HEYDON